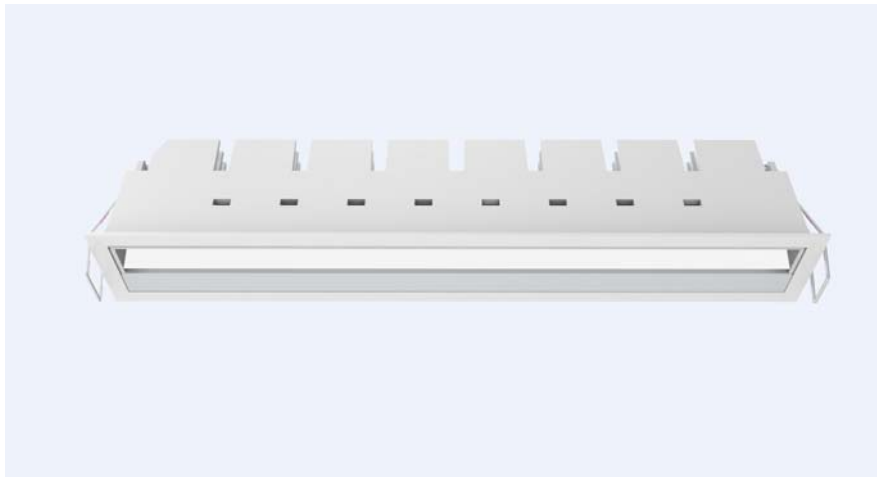


---

LED Downlight FUSION Series LE-  
FW10-22W-930

---



Light Output Ratio:	100.0%	
Luminaire Power:	24.42 W	
SHR Nominal:	1.25	Calculated using the TM5
SHR Maximum:	1.35	fine grid method.

---

C Range: 0 - 360DEG  
C Interval: 15.0DEG  
Test Speed: HIGH  
Temperature: 25.3DEG  
Operators: Meng Yongjian  
Test Date: 2017-06-14

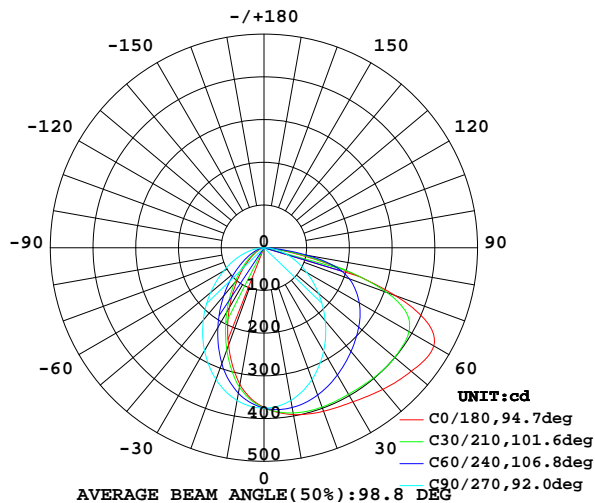
γ Range: 0 - 90DEG  
γ Interval: 1.0DEG  
Test System: EVERFINE GO-2000B\_V1 SYSTEM V2.0.288  
Humidity: 52%  
Test Distance: 5.850m [K=1.0000]  
Remarks:

## LUMINAIRE PHOTOMETRIC TEST REPORT

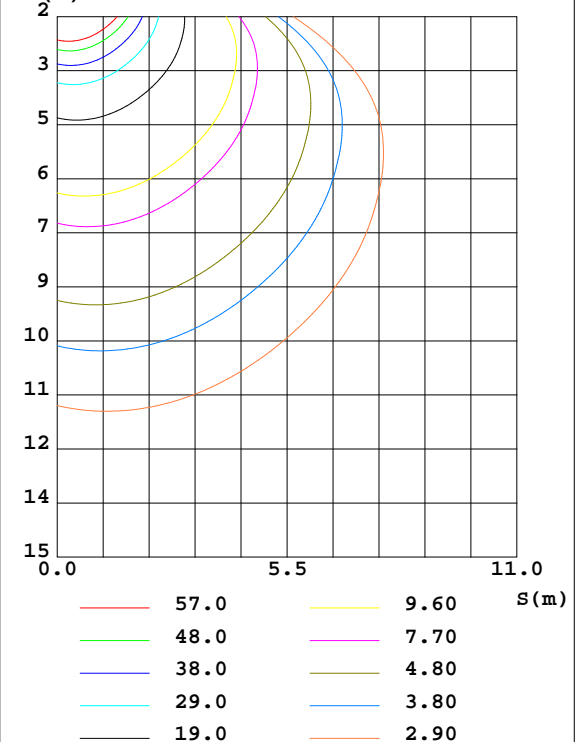
Test:U:220.6V I:0.1148A P:24.42W PF:0.9632 Lamp Flux:1054.24x1 lm		
NAME: FW10-22W-930	TYPE:Downlight	SERIAL No.:
SPEC.:3000K	DIM.: L290mm*W45mm*H60mm	
MFR.:		

DATA OF LAMP		PHOTOMETRIC DATA Eff: 43.17 lm/W			
MODEL	CREE-3000K	I <sub>max</sub> (cd)	461.1	S/MH(C0/180)	0.78
NOMINAL POWER(W)	24	LOR(%)	100.0	S/MH(C90/270)	1.12
RATED VOLTAGE(V)	220	TOTAL FLUX(lm)	1054.2	η UP,DN(C0-180)	0.0,53.2
NOMINAL FLUX(lm)	1054.24	CIE CLASS	DIRECT	η UP,DN(C180-360)	0.0,46.8
LAMPS INSIDE	1	η up(%)	0.0	CIBSE SHR NOM	1.25
TEST VOLTAGE(V)	220	η down(%)	100.0	CIBSE SHR MAX	1.35

LUMINOUS INTENSITY DISTRIBUTION DIAGRAM



C0 PLANE ISOLUX DIAGRAM (UNIT:lx)



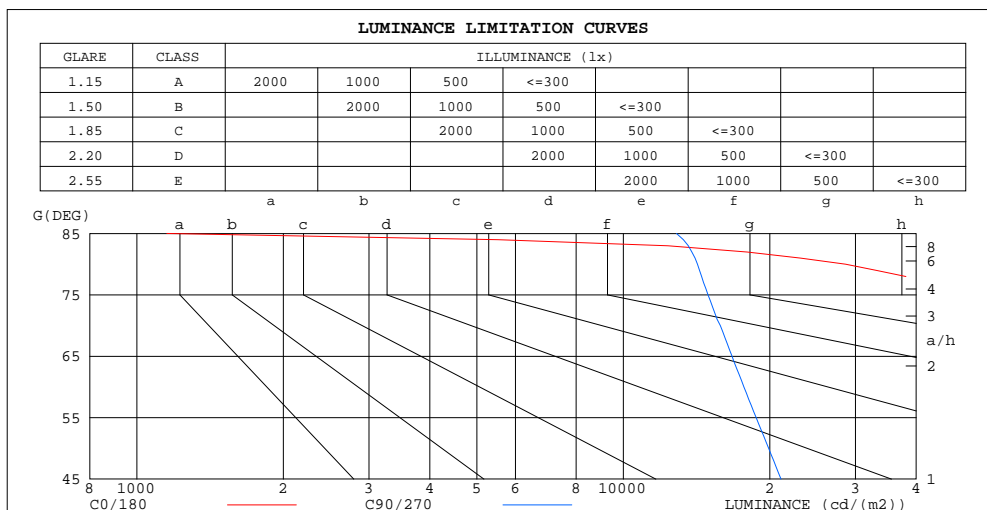
C Range: 0 - 360DEG  
 C Interval: 15.0DEG  
 Test Speed: HIGH  
 Temperature:25.3DEG  
 Operators:Meng Yongjian  
 Test Date:2017-06-14

γ Range: 0 - 90DEG  
 γ Interval: 1.0DEG  
 Test System:EVERFINE GO-2000B\_V1 SYSTEM V2.0.288  
 Humidity:52%  
 Test Distance:5.850m [K=1.0000]  
 Remarks:

## ZONAL FLUX DIAGRAM AND LUMINANCE LIMITATION CURVES

### ZONAL FLUX DIAGRAM:

$\gamma$	C0	C45	C90	C135	C180	C225	C270	C315	$\gamma$	$\Phi$ zone	$\Phi$ total	$\%lum, lamp$
10	396.5	387.0	362.8	338.4	325.3	336.9	363.0	388.1	0- 10	35.21	35.21	3.34,3.34
20	407.2	383.9	328.5	270.5	243.0	268.2	328.3	384.9	10- 20	97.57	132.8	12.6,12.6
30	416.5	372.7	279.3	193.2	162.0	190.5	278.5	373.4	20- 30	140.8	273.5	25.9,25.9
40	432.7	360.4	223.1	123.7	95.13	121.7	221.4	360.5	30- 40	164.5	438.0	41.5,41.5
50	449.8	347.8	166.9	71.07	48.80	69.69	163.2	346.9	40- 50	174.0	612.0	58.1,58.1
60	458.9	325.4	115.5	36.63	22.47	35.45	109.5	323.0	50- 60	173.9	785.9	74.5,74.5
70	326.0	270.7	70.66	17.18	10.01	16.28	63.57	270.1	60- 70	158.3	944.3	89.6,89.6
80	64.87	90.37	32.18	6.680	4.143	6.292	25.76	96.86	70- 80	93.66	1038	98.5,98.5
90	0.1684	0.4526	0.8309	0.7653	0.5641	0.6450	0.4876	0.2821	80- 90	16.32	1054	100,100
100									90-100			
110									100-110			
120									110-120			
130									120-130			
140									130-140			
150									140-150			
160									150-160			
170									160-170			
180									170-180			
DEG	LUMINOUS INTENSITY:cd									UNIT:lm		



LUMINANCE cd/(m2)		
G(DEG)	C0/180	C90/270
85	1152	12865
80	28627	14202
75	53112	14934
70	73036	15830
65	77210	16727
60	70336	17694
55	61299	18751
50	53623	19894
45	47864	21088

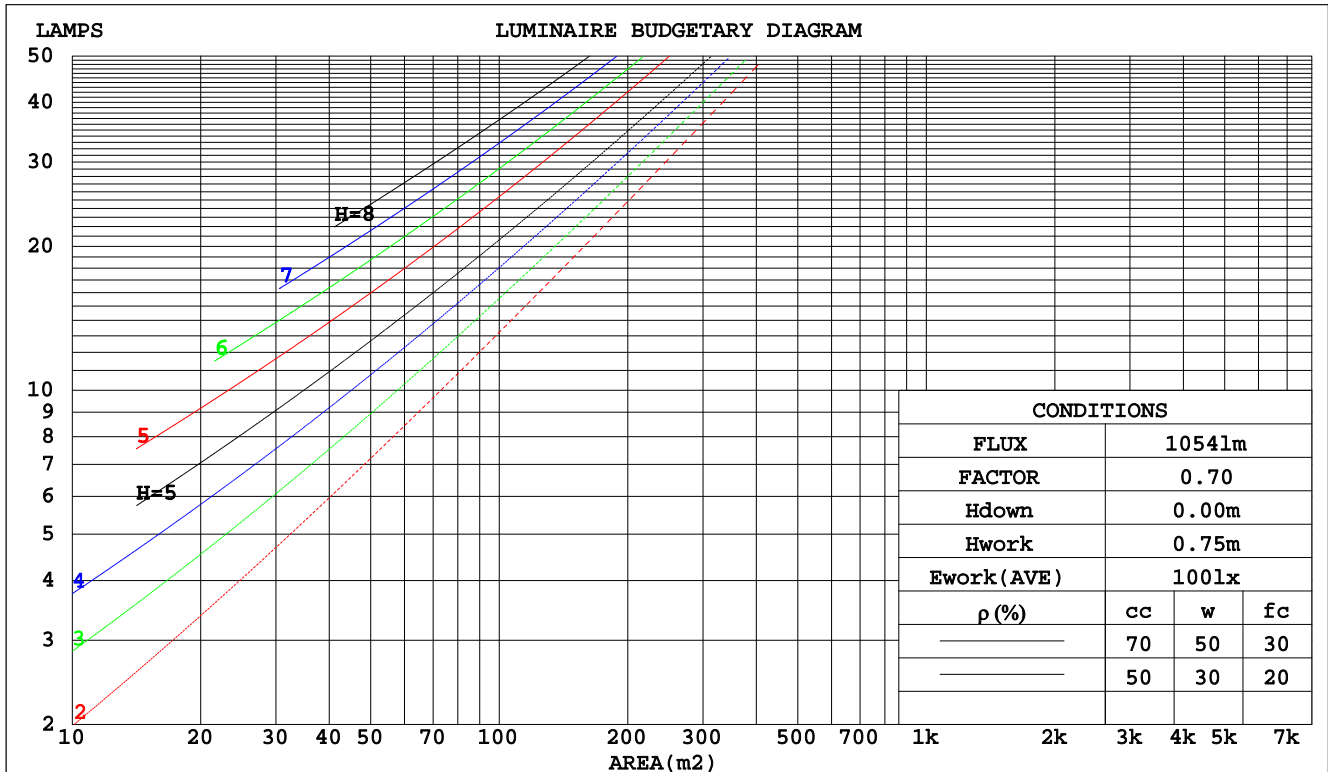
C Range: 0 - 360DEG  
 C Interval: 15.0DEG  
 Test Speed: HIGH  
 Temperature:25.3DEG  
 Operators:Meng Yongjian  
 Test Date:2017-06-14

$\gamma$  Range: 0 - 90DEG  
 $\gamma$  Interval: 1.0DEG  
 Test System:EVERFINE GO-2000B\_V1 SYSTEM V2.0.288  
 Humidity:52%  
 Test Distance:5.850m [K=1.0000]  
 Remarks:

## CU AND LUMINAIRE BUDGETARY ESTIMATE DIAGRAM

Test:U:220.6V I:0.1148A P:24.42W PF:0.9632 Lamp Flux:1054.24x1 lm		
NAME: FW10-22W-930	TYPE:Downlight	SERIAL No.:
SPEC.:3000K	DIM.: L290mm*W45mm*H60mm	
MFR.:		

pcc	80%			70%			50%			30%			10%			0
pw	50%	30%	10%	50%	30%	10%	50%	30%	10%	50%	30%	10%	50%	30%	10%	0
pfc	20%			20%			20%			20%			20%			0
RCR	RCR:Room Cavity Ratio						Coefficients of Utilization(CU)									
0.0	1.19	1.19	1.19	1.16	1.16	1.16	1.11	1.11	1.11	1.06	1.06	1.06	1.02	1.02	1.02	1.00
1.0	1.03	.99	.95	1.01	.97	.93	.97	.93	.90	.93	.90	.87	.89	.87	.85	.83
2.0	.89	.82	.76	.87	.81	.75	.84	.78	.73	.80	.76	.72	.77	.73	.70	.68
3.0	.78	.69	.62	.76	.68	.62	.73	.66	.61	.70	.65	.60	.68	.63	.59	.56
4.0	.69	.59	.52	.67	.59	.52	.65	.57	.51	.62	.56	.51	.60	.54	.50	.48
5.0	.61	.52	.45	.60	.51	.45	.58	.50	.44	.56	.49	.44	.54	.48	.43	.41
6.0	.55	.46	.39	.54	.45	.39	.52	.44	.38	.50	.43	.38	.49	.43	.38	.36
7.0	.50	.41	.34	.49	.40	.34	.47	.40	.34	.46	.39	.34	.44	.38	.33	.31
8.0	.45	.37	.31	.45	.36	.31	.43	.36	.30	.42	.35	.30	.41	.35	.30	.28
9.0	.42	.33	.28	.41	.33	.27	.40	.32	.27	.39	.32	.27	.38	.32	.27	.25
10.0	.38	.30	.25	.38	.30	.25	.37	.30	.25	.36	.29	.25	.35	.29	.25	.23



C Range: 0 - 360DEG  
 C Interval: 15.0DEG  
 Test Speed: HIGH  
 Temperature: 25.3DEG  
 Operators: Meng Yongjian  
 Test Date: 2017-06-14

γ Range: 0 - 90DEG  
 γ Interval: 1.0DEG  
 Test System: EVERFINE GO-2000B\_V1 SYSTEM V2.0.288  
 Humidity: 52%  
 Test Distance: 5.850m [K=1.0000]  
 Remarks:

## WEC AND CCEC

Test:U:220.6V I:0.1148A P:24.42W PF:0.9632 Lamp Flux:1054.24x1 lm					
NAME: FW10-22W-930			TYPE:Downlight		SERIAL No.:
SPEC.:3000K			DIM.: L290mm*W45mm*H60mm		
MFR.:					

pcc	80%			70%			50%			30%			10%			0	
pw	50%	30%	10%	50%	30%	10%	50%	30%	10%	50%	30%	10%	50%	30%	10%	0	
pfc	20%			20%			20%			20%			20%			0	
RCR	RCR:Room Cavity Ratio						Wall Exitance Coefficients(WEC)										
0.0																	
1.0	.322	.183	.058	.315	.180	.057	.302	.173	.055	.290	.167	.054	.278	.161	.052		
2.0	.304	.167	.051	.298	.164	.051	.286	.159	.049	.275	.154	.048	.265	.150	.047		
3.0	.280	.149	.045	.275	.147	.044	.264	.143	.044	.255	.139	.043	.246	.136	.042		
4.0	.257	.134	.039	.253	.132	.039	.243	.129	.039	.235	.126	.038	.227	.123	.037		
5.0	.237	.121	.035	.233	.119	.035	.224	.117	.034	.217	.114	.034	.209	.112	.034		
6.0	.219	.110	.031	.215	.109	.031	.208	.106	.031	.201	.104	.031	.194	.102	.030		
7.0	.203	.100	.028	.200	.099	.028	.193	.098	.028	.187	.096	.028	.181	.094	.028		
8.0	.189	.092	.026	.186	.092	.026	.180	.090	.026	.175	.088	.026	.169	.087	.025		
9.0	.177	.085	.024	.174	.085	.024	.169	.083	.024	.164	.082	.023	.159	.081	.023		
10.0	.166	.080	.022	.163	.079	.022	.159	.078	.022	.154	.077	.022	.150	.075	.022		

pcc	80%			70%			50%			30%			10%			0
pw	50%	30%	10%	50%	30%	10%	50%	30%	10%	50%	30%	10%	50%	30%	10%	0
pfc	20%			20%			20%			20%			20%			0
RCR	RCR:Room Cavity Ratio						Ceiling Cavity Exitance Coefficients(CCEC)									
0.0	.190	.190	.190	.163	.163	.163	.111	.111	.111	.064	.064	.064	.020	.020	.020	
1.0	.181	.156	.133	.155	.134	.115	.106	.092	.079	.061	.053	.046	.020	.017	.015	
2.0	.174	.132	.097	.149	.113	.083	.102	.079	.058	.059	.046	.034	.019	.015	.011	
3.0	.166	.114	.073	.143	.099	.063	.098	.069	.044	.057	.040	.026	.018	.013	.009	
4.0	.159	.101	.057	.136	.087	.050	.094	.061	.035	.054	.036	.021	.017	.012	.007	
5.0	.151	.091	.046	.130	.079	.040	.090	.055	.028	.052	.032	.017	.017	.011	.006	
6.0	.144	.083	.038	.124	.071	.033	.085	.050	.024	.050	.029	.014	.016	.010	.005	
7.0	.137	.076	.033	.118	.066	.028	.081	.046	.020	.047	.027	.012	.015	.009	.004	
8.0	.130	.070	.028	.112	.061	.025	.078	.043	.017	.045	.025	.010	.015	.008	.003	
9.0	.124	.065	.025	.107	.056	.022	.074	.040	.015	.043	.023	.009	.014	.008	.003	
10.0	.118	.061	.022	.102	.053	.019	.071	.037	.014	.041	.022	.008	.013	.007	.003	

C Range: 0 - 360DEG  
 C Interval: 15.0DEG  
 Test Speed: HIGH  
 Temperature:25.3DEG  
 Operators:Meng Yongjian  
 Test Date:2017-06-14

γ Range: 0 - 90DEG  
 γ Interval: 1.0DEG  
 Test System:EVERFINE GO-2000B\_V1 SYSTEM V2.0.288  
 Humidity:52%  
 Test Distance:5.850m [K=1.0000]  
 Remarks:

UGR(Unified Glare Rating) Table

Test:U:220.6V I:0.1148A P:24.42W PF:0.9632 Lamp Flux:1054.24x1 lm										
NAME: FW10-22W-930					TYPE:Downlight			SERIAL No.:		
SPEC.:3000K					DIM.: L290mm*W45mm*H60mm					
MFR.:										
ceiling/cavity	0.7	0.7	0.5	0.5	0.3	0.7	0.7	0.5	0.5	0.3
walls	0.5	0.3	0.5	0.3	0.3	0.5	0.3	0.5	0.3	0.3
working plane	0.2	0.2	0.2	0.2	0.2	0.2	0.2	0.2	0.2	0.2
Room dimensions	Viewed crosswise					Viewed endwise				
x = 2H y = 2H	30.1	31.6	30.4	31.9	32.1	25.5	27.1	25.8	27.3	27.5
3H	32.6	34.1	32.9	34.3	34.5	27.0	28.5	27.3	28.7	28.9
4H	33.2	34.6	33.5	34.9	35.1	27.6	29.0	27.9	29.3	29.5
6H	33.4	34.7	33.7	35.0	35.2	28.1	29.4	28.4	29.6	29.9
8H	33.4	34.6	33.7	34.9	35.2	28.2	29.5	28.5	29.7	30.0
12H	33.3	34.5	33.7	34.8	35.1	28.3	29.5	28.6	29.8	30.1
4H 2H	30.6	32.0	31.0	32.3	32.5	27.6	29.0	27.9	29.2	29.5
3H	33.3	34.6	33.7	34.9	35.2	29.4	30.7	29.8	31.0	31.3
4H	34.1	35.2	34.4	35.5	35.8	30.2	31.4	30.6	31.7	32.0
6H	34.3	35.3	34.7	35.7	36.0	30.8	31.8	31.3	32.2	32.6
8H	34.3	35.2	34.7	35.6	36.0	31.0	32.0	31.5	32.3	32.7
12H	34.3	35.1	34.7	35.5	35.9	31.1	32.0	31.6	32.4	32.8
8H 4H	34.3	35.2	34.7	35.6	36.0	31.2	32.1	31.6	32.5	32.9
6H	34.6	35.4	35.0	35.8	36.2	32.0	32.8	32.4	33.2	33.6
8H	34.6	35.3	35.1	35.7	36.2	32.3	33.0	32.8	33.4	33.9
12H	34.6	35.2	35.1	35.6	36.1	32.5	33.1	33.0	33.5	34.0
12H 4H	34.3	35.1	34.7	35.5	35.9	31.2	32.0	31.6	32.4	32.8
6H	34.6	35.3	35.1	35.7	36.2	32.1	32.7	32.5	33.2	33.6
8H	34.7	35.2	35.1	35.7	36.2	32.4	33.0	32.9	33.4	33.9
Variations with the observer position at spacings:										
S = 1.0H	+ 0.1 / - 0.1					+ 0.1 / - 0.2				
1.5H	+ 0.1 / - 0.3					+ 0.3 / - 0.4				
2.0H	+ 0.4 / - 0.5					+ 0.4 / - 0.7				

CIE Pub.117 Corrected 1054 lm Total Lamp Luminous Flux.(8log(F/F0) = 0.2)

C Range: 0 - 360DEG  
 C Interval: 15.0DEG  
 Test Speed: HIGH  
 Temperature:25.3DEG  
 Operators:Meng Yongjian  
 Test Date:2017-06-14

γ Range: 0 - 90DEG  
 γ Interval: 1.0DEG  
 Test System:EVERFINE GO-2000B\_V1 SYSTEM V2.0.288  
 Humidity:52%  
 Test Distance:5.850m [K=1.0000]  
 Remarks:

## UTILIZATION FACTORS TABLE

Test:U:220.6V I:0.1148A P:24.42W PF:0.9632 Lamp Flux:1054.24x1 lm		
NAME: FW10-22W-930	TYPE:Downlight	SERIAL No.:
SPEC.:3000K	DIM.: L290mm*W45mm*H60mm	
MFR.:		

REFLECTANCE										
Ceiling	0.8	0.8	0.8	0.7	0.7	0.7	0.5	0.5	0.5	0
Walls	0.7	0.5	0.3	0.7	0.5	0.3	0.7	0.5	0.3	0
Working plane	0.2	0.2	0.2	0.2	0.2	0.2	0.2	0.2	0.2	0
ROOM INDEX	UTILIZATION FACTORS(PERCENT) $k(RI) \times RCR = 5$									
k = 0.60	56	44	37	55	44	37	54	43	37	30
0.80	66	54	46	65	53	46	63	53	46	39
1.00	74	62	55	73	62	55	71	63	54	47
1.25	81	70	63	80	69	62	77	68	61	54
1.50	86	76	69	85	75	68	82	73	67	59
2.00	94	84	78	92	83	77	88	81	75	67
2.50	98	90	83	96	88	82	92	85	80	72
3.00	101	94	88	99	93	87	95	90	85	76
4.00	106	100	95	103	98	93	99	95	91	82
5.00	108	103	99	106	101	98	101	98	94	85
ROOM INDEX	UF(total)									Direct
According to DIN EN 13032-2 2004			Suspended					SHRNOM = 1.25		

C Range: 0 - 360DEG  
 C Interval: 15.0DEG  
 Test Speed: HIGH  
 Temperature:25.3DEG  
 Operators:Meng Yongjian  
 Test Date:2017-06-14

γ Range: 0 - 90DEG  
 γ Interval: 1.0DEG  
 Test System:EVERFINE GO-2000B\_V1 SYSTEM V2.0.288  
 Humidity:52%  
 Test Distance:5.850m [K=1.0000]  
 Remarks:

## ISOCANDELA DIAGRAM

Test:U:220.6V I:0.1148A P:24.42W PF:0.9632 Lamp Flux:1054.24x1 lm		
NAME: FW10-22W-930	TYPE:Downlight	SERIAL No.:
SPEC.:3000K	DIM.: L290mm*W45mm*H60mm	
MFR.:		

Conical surface Flux(90deg):

524.53 lm

%lum = 49.8%

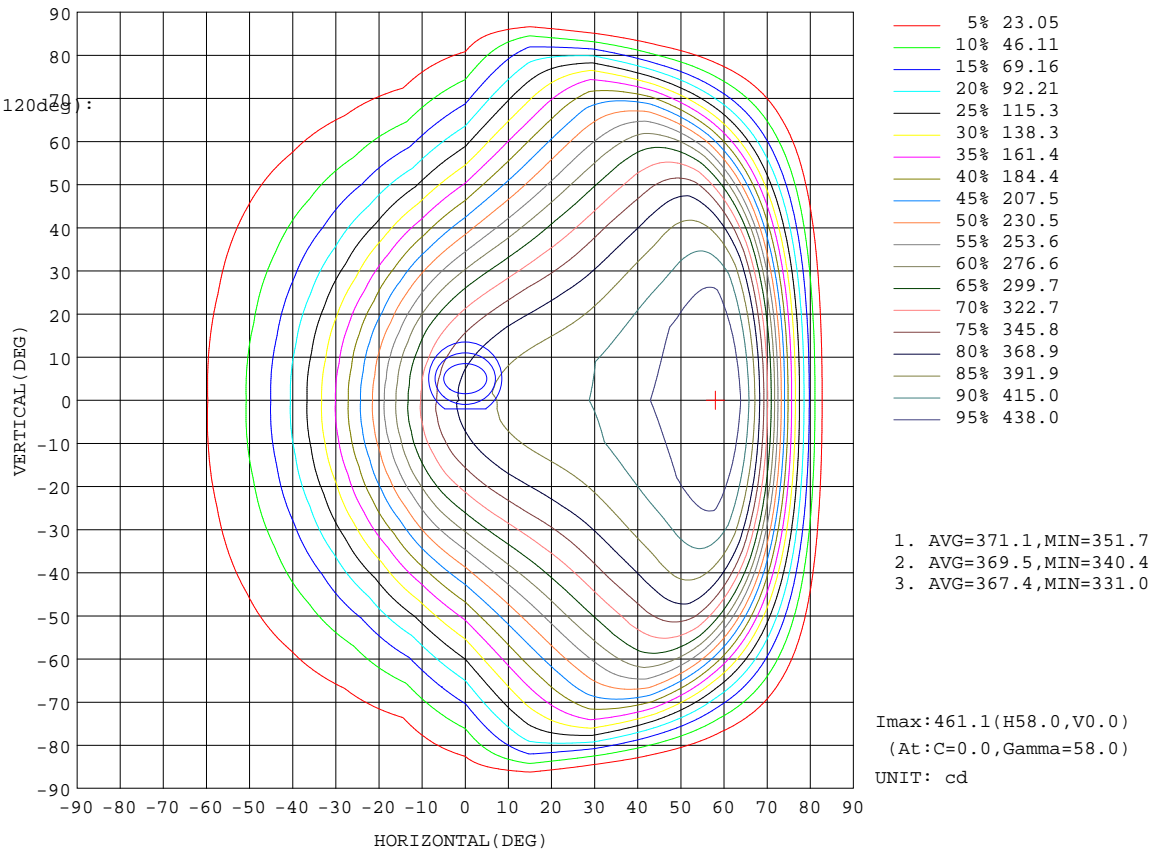
%lamp = 49.8%

Conical surface Flux(120deg):

785.9 lm

%lum = 74.5%

%lamp = 74.5%



C Range: 0 - 360DEG  
C Interval: 15.0DEG  
Test Speed: HIGH  
Temperature: 25.3DEG  
Operators: Meng Yongjian  
Test Date: 2017-06-14

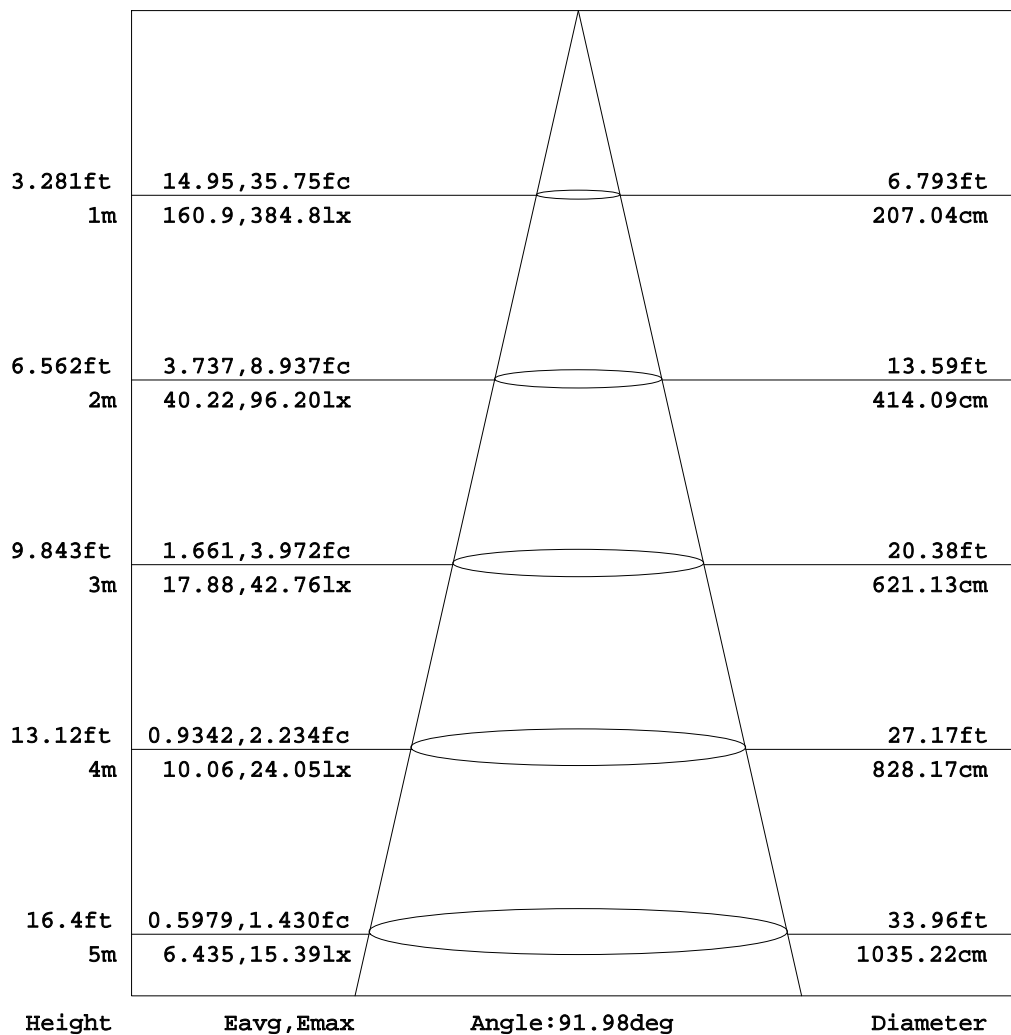
γ Range: 0 - 90DEG  
γ Interval: 1.0DEG  
Test System: EVERFINE GO-2000B\_V1 SYSTEM V2.0.288  
Humidity: 52%  
Test Distance: 5.850m [K=1.0000]  
Remarks:



## AAI Figure

Test:U:220.6V I:0.1148A P:24.42W PF:0.9632 Lamp Flux:1054.24x1 lm		
NAME: FW10-22W-930	TYPE:Downlight	SERIAL No.:
SPEC.:3000K	DIM.: L290mm*W45mm*H60mm	
MFR.:		

Flux out:542.0 lm



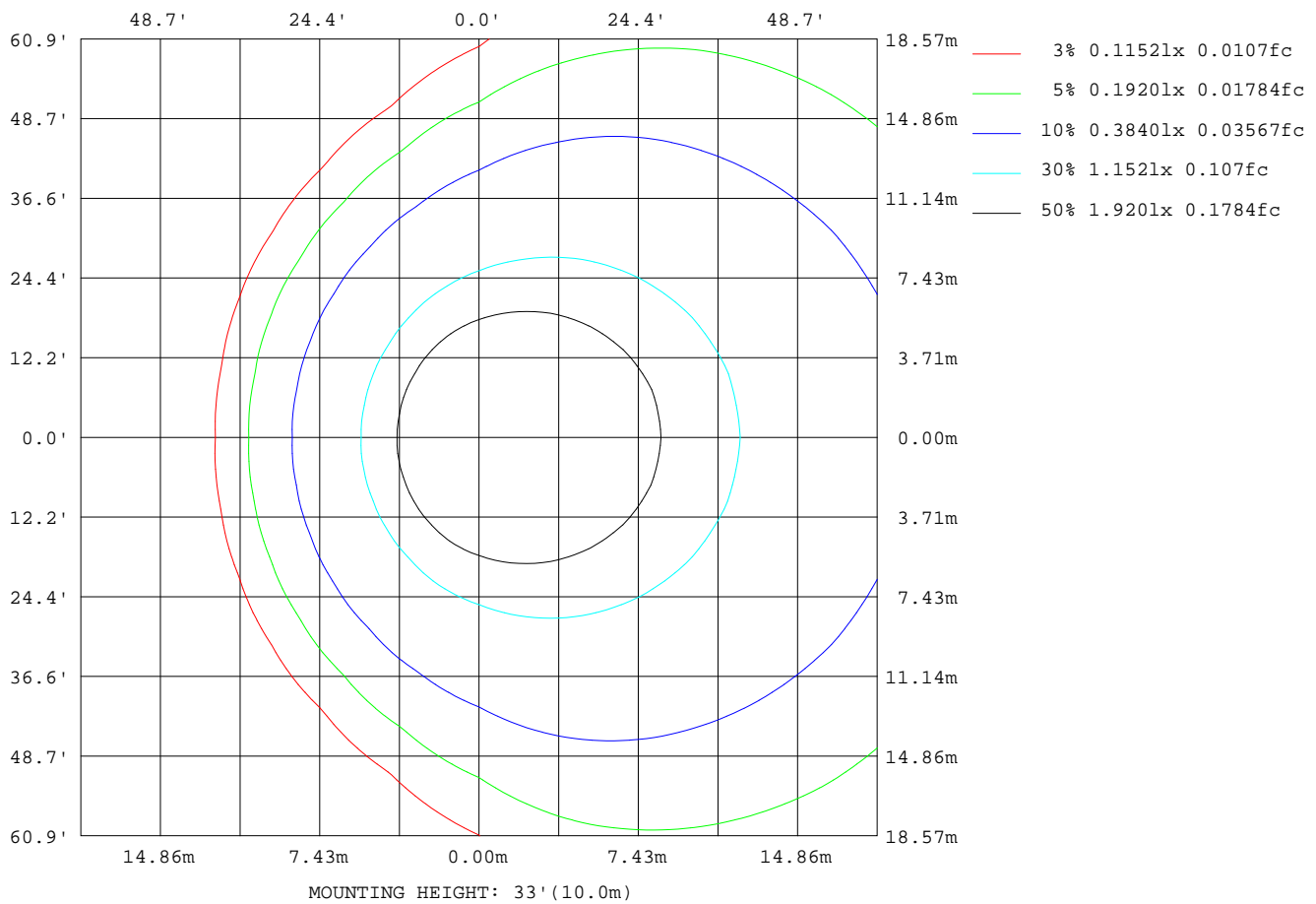
Note: The Curves indicate the illuminated area and the average illumination when the luminaire is at different distance.

C Range: 0 - 360DEG  
C Interval: 15.0DEG  
Test Speed: HIGH  
Temperature: 25.3DEG  
Operators: Meng Yongjian  
Test Date: 2017-06-14

γ Range: 0 - 90DEG  
γ Interval: 1.0DEG  
Test System: EVERFINE GO-2000B\_V1 SYSTEM V2.0.288  
Humidity: 52%  
Test Distance: 5.850m [K=1.0000]  
Remarks:

## ISOLUX DIAGRAM

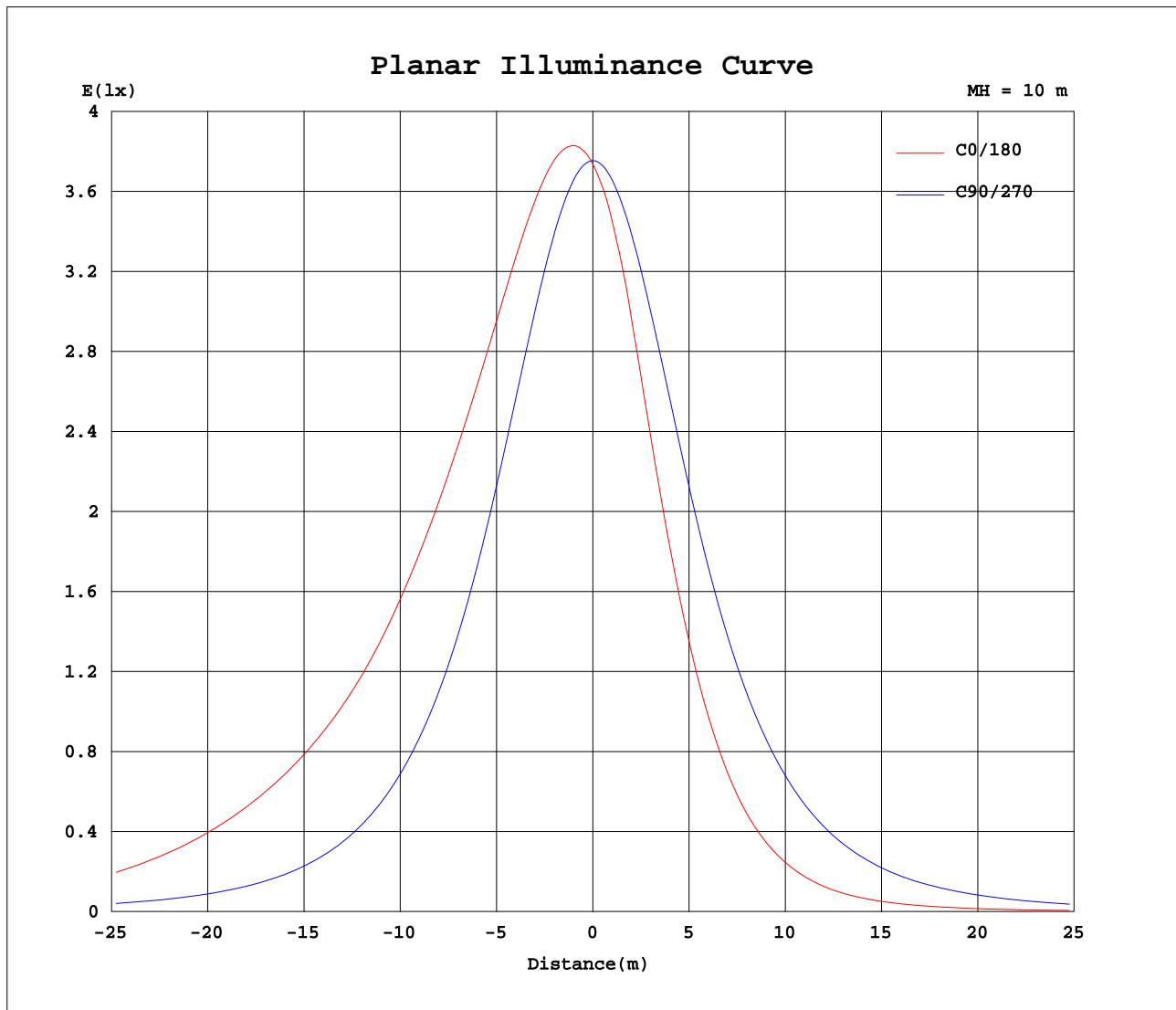
Test:U:220.6V I:0.1148A P:24.42W PF:0.9632 Lamp Flux:1054.24x1 lm		
NAME: FW10-22W-930	TYPE:Downlight	SERIAL No.:
SPEC.:3000K	DIM.: L290mm*W45mm*H60mm	
MFR.:		



C Range: 0 - 360DEG  
 C Interval: 15.0DEG  
 Test Speed: HIGH  
 Temperature: 25.3DEG  
 Operators: Meng Yongjian  
 Test Date: 2017-06-14

γ Range: 0 - 90DEG  
 γ Interval: 1.0DEG  
 Test System: EVERFINE GO-2000B\_V1 SYSTEM V2.0.288  
 Humidity: 52%  
 Test Distance: 5.850m [K=1.0000]  
 Remarks:

## Planar Illuminance Curve



C Range: 0 - 360DEG  
C Interval: 15.0DEG  
Test Speed: HIGH  
Temperature: 25.3DEG  
Operators: Meng Yongjian  
Test Date: 2017-06-14

$\gamma$  Range: 0 - 90DEG  
 $\gamma$  Interval: 1.0DEG  
Test System: EVERFINE GO-2000B\_V1 SYSTEM V2.0.288  
Humidity: 52%  
Test Distance: 5.850m [K=1.0000]  
Remarks:

## LUMINOUS DISTRIBUTION INTENSITY DATA

Test:U:220.6V I:0.1148A P:24.42W PF:0.9632 Lamp Flux:1054.24x1 lm		
NAME: FW10-22W-930	TYPE:Downlight	SERIAL No.:
SPEC.:3000K	DIM.: L290mm*W45mm*H60mm	
MFR.:		

Table--1

UNIT: cd

[illegible]

C Range: 0 - 360DEG  
C Interval: 15.0DEG  
Test Speed: HIGH  
Temperature: 25.3DEG  
Operators: Meng Yongjian  
Test Date: 2017-06-14

```

γ Range: 0 - 90DEG
γ Interval: 1.0DEG
Test System:EVERFINE GO-2000B_V1 SYSTEM V2.0.288
Humidity:52%
Test Distance:5.850m [K=1.0000]
Remarks:

```

## LUMINOUS DISTRIBUTION INTENSITY DATA

Test:U:220.6V I:0.1148A P:24.42W PF:0.9632 Lamp Flux:1054.24x1 lm		
NAME: FW10-22W-930	TYPE:Downlight	SERIAL No.:
SPEC.:3000K	DIM.: L290mm*W45mm*H60mm	
MFR.:		

Table--2

UNIT: cd

[illegible]

C Range: 0 - 360DEG  
C Interval: 15.0DEG  
Test Speed: HIGH  
Temperature: 25.3DEG  
Operators: Meng Yongjian  
Test Date: 2017-06-14

```

γ Range: 0 - 90DEG
γ Interval: 1.0DEG
Test System:EVERFINE GO-2000B_V1 SYSTEM V2.0.288
Humidity:52%
Test Distance:5.850m [K=1.0000]
Remarks:

```

## Photometric Data Table [cd]

G/C	0.0	15.0	30.0	45.0	60.0	75.0	90.0	105.0	120.0	135.0
0.0	373.7	374.0	374.7	374.7	375.2	375.2	375.5	375.6	375.6	375.9
3.0	382.3	382.3	382.0	380.5	378.8	376.6	374.3	372.0	369.7	368.0
6.0	389.3	389.0	387.6	384.4	380.5	375.9	370.8	366.1	361.3	357.7
9.0	394.9	394.2	391.5	386.6	380.3	373.0	365.1	357.9	350.4	343.6
12.0	399.4	398.2	394.2	387.3	378.4	368.4	357.5	347.6	336.4	327.6
15.0	402.9	401.3	395.9	386.9	375.2	362.0	348.0	335.1	320.6	308.0
18.0	405.7	403.5	396.7	385.4	370.6	354.2	336.8	320.8	302.8	285.7
21.0	408.0	405.3	396.8	383.0	365.1	345.1	324.1	304.7	282.7	262.9
24.0	410.4	407.0	396.5	379.9	358.6	334.9	310.2	287.2	261.2	239.4
27.0	413.1	408.9	396.2	376.4	351.5	323.8	295.2	268.8	239.7	216.0
30.0	416.5	411.2	396.0	372.7	343.8	312.0	279.3	250.0	217.9	193.2
33.0	420.7	414.3	396.1	368.9	335.9	299.7	262.8	230.3	196.2	171.2
36.0	425.6	418.1	396.8	365.1	327.8	287.2	245.9	210.5	175.2	150.2
39.0	430.9	422.3	397.8	361.6	319.6	274.7	228.9	190.4	155.0	130.3
42.0	436.3	426.5	398.9	358.2	311.5	262.0	211.7	170.8	135.7	111.7
45.0	441.7	430.7	399.7	354.7	303.4	249.5	194.6	152.2	117.6	95.23
48.0	446.6	434.3	400.0	350.8	295.1	237.1	177.8	133.8	100.7	80.12
51.0	451.6	437.5	399.3	346.2	286.7	224.7	161.5	116.3	85.38	66.86
54.0	457.4	441.6	398.0	340.5	277.8	212.4	145.5	100.1	71.59	55.38
57.0	460.8	443.8	396.4	333.4	268.1	200.0	130.2	85.13	59.00	45.28
60.0	458.9	441.8	391.8	325.4	257.5	187.6	115.5	71.31	48.20	36.63
63.0	445.3	430.3	382.1	315.4	245.7	175.1	101.3	58.73	38.99	29.45
66.0	411.9	401.9	361.6	301.4	232.7	162.2	87.82	47.38	31.05	23.50
69.0	351.9	348.9	323.5	280.3	218.5	148.9	74.87	37.32	24.37	18.62
72.0	268.4	271.6	263.6	246.4	199.5	134.8	62.23	28.49	18.83	14.55
75.0	179.4	185.2	188.4	195.1	174.2	118.7	50.44	21.07	14.34	11.16
78.0	103.4	108.0	115.4	131.9	136.6	101.9	39.29	14.95	10.61	8.319
81.0	47.23	50.75	56.76	71.70	86.69	80.82	28.67	10.11	7.477	5.937
84.0	7.536	10.11	15.03	26.01	38.84	51.60	18.12	6.076	4.816	3.958
87.0	0.5398	0.7051	0.9369	1.163	3.628	15.99	7.790	2.970	2.553	2.118
90.0	0.1684	0.2842	0.4242	0.4526	0.5138	0.5575	0.8309	0.6669	0.7543	0.7653
G/C	150.0	165.0	180.0	195.0	210.0	225.0	240.0	255.0	270.0	285.0
0.0	375.8	376.2	374.0	374.7	374.7	375.2	375.2	375.2	375.5	375.6
3.0	366.3	365.7	363.1	363.7	365.4	366.8	369.3	371.5	374.3	376.9
6.0	353.7	351.9	349.1	349.8	353.1	356.3	361.0	365.5	370.9	376.1
9.0	337.8	335.0	331.8	332.8	337.3	342.2	350.1	357.1	365.3	373.1
12.0	318.5	313.0	309.5	311.1	318.4	326.0	336.2	346.7	357.6	368.3
15.0	295.3	289.0	285.2	286.9	295.0	305.8	320.2	333.9	348.0	361.8
18.0	271.4	263.9	259.9	262.0	271.1	283.5	302.2	319.3	336.8	353.8
21.0	246.7	238.5	234.5	236.6	246.4	260.5	281.6	302.7	323.9	344.5
24.0	222.2	213.6	209.6	211.8	221.8	236.8	259.9	284.9	309.7	334.0
27.0	198.3	189.3	185.3	187.5	197.8	213.3	238.2	266.4	294.5	322.7
30.0	175.1	165.8	162.0	164.2	174.6	190.5	216.3	247.1	278.5	310.6
33.0	152.9	143.9	140.4	142.5	152.5	168.5	194.4	227.3	261.7	298.1
36.0	132.3	123.0	119.6	122.2	131.9	147.5	173.3	206.7	244.6	285.2
39.0	113.3	104.2	100.9	103.5	112.6	127.9	153.2	186.8	227.2	272.4
42.0	95.93	87.27	84.29	86.75	95.29	110.0	133.9	167.4	209.8	259.4
45.0	80.42	72.49	69.55	71.98	79.95	93.53	115.6	148.4	192.2	246.2
48.0	66.90	59.30	56.50	58.72	66.51	78.67	98.79	130.0	174.7	232.9
51.0	54.88	48.00	45.34	47.45	54.68	65.31	83.44	112.4	157.6	219.7
54.0	44.69	38.64	36.11	38.13	44.51	54.02	69.63	96.15	141.1	206.6
57.0	36.23	30.82	28.52	30.42	36.06	44.02	57.25	81.17	124.6	193.7
60.0	29.15	24.56	22.47	24.18	28.99	35.45	46.56	67.31	109.5	180.6
63.0	23.41	19.56	17.66	19.18	23.24	28.35	37.42	54.74	94.91	167.2
66.0	18.71	15.52	13.88	15.13	18.48	22.47	29.58	43.65	81.03	153.5
69.0	14.78	12.24	10.87	11.92	14.56	17.68	23.00	33.90	67.88	140.0
72.0	11.57	9.592	8.499	9.305	11.34	13.72	17.60	25.49	55.37	126.2
75.0	8.887	7.438	6.582	7.215	8.712	10.47	13.25	18.53	43.59	111.4
78.0	6.674	5.668	5.041	5.451	6.520	7.806	9.695	12.81	32.59	95.79
81.0	4.834	4.165	3.714	4.007	4.754	5.598	6.821	8.378	22.47	77.80
84.0	3.197	2.775	2.468	2.665	3.145	3.725	4.467	5.102	13.18	53.33
87.0	1.700	1.469	1.345	1.466	1.705	1.995	2.427	2.678	5.149	19.99
90.0	0.7696	0.7237	0.5641	0.6100	0.6253	0.6450	0.5838	0.6363	0.4876	0.4613
G/C	300.0	315.0	330.0	345.0						
0.0	375.6	375.9	375.8	376.2						
3.0	379.3	381.6	383.2	384.5						
6.0	381.0	385.5	388.8	391.2						
9.0	380.9	387.7	392.9	396.5						
12.0	379.0	388.4	395.7	400.6						
15.0	375.8	387.9	397.5	403.7						
18.0	371.3	386.4	398.3	406.0						
21.0	365.6	384.0	398.5	407.8						

C Range: 0 - 360DEG  
 C Interval: 15.0DEG  
 Test Speed: HIGH  
 Temperature: 25.3DEG  
 Operators: Meng Yongjian  
 Test Date: 2017-06-14

γ Range: 0 - 90DEG  
 γ Interval: 1.0DEG  
 Test System: EVERFINE GO-2000B\_V1 SYSTEM V2.0.288  
 Humidity: 52%  
 Test Distance: 5.850m [K=1.0000]  
 Remarks:

## Photometric Data Table [cd]

24.0	359.1	380.9	398.2	409.5
27.0	351.8	377.2	397.8	411.4
30.0	344.1	373.4	397.5	413.7
33.0	335.9	369.4	397.5	416.7
36.0	327.5	365.5	398.0	420.5
39.0	319.1	361.7	398.8	424.6
42.0	310.7	358.0	399.7	428.8
45.0	302.3	354.2	400.3	432.9
48.0	293.2	350.1	400.4	436.4
51.0	283.7	345.1	399.5	439.4
54.0	274.1	339.1	397.8	443.2
57.0	264.2	331.7	396.1	445.1
60.0	253.6	323.0	391.2	443.2
63.0	242.0	313.0	382.0	432.1
66.0	229.4	298.9	363.4	404.3
69.0	215.7	279.0	328.4	352.5
72.0	198.1	247.5	272.3	276.4
75.0	175.2	199.5	199.1	189.7
78.0	142.1	137.8	125.6	111.9
81.0	95.28	77.64	63.71	53.27
84.0	46.37	30.13	19.58	11.84
87.0	8.681	1.113	0.7960	0.6491
90.0	0.3236	0.2821	0.2493	0.2165

C Range: 0 - 360DEG  
C Interval: 15.0DEG  
Test Speed: HIGH  
Temperature: 25.3DEG  
Operators: Meng Yongjian  
Test Date: 2017-06-14

γ Range: 0 - 90DEG  
γ Interval: 1.0DEG  
Test System: EVERFINE GO-2000B\_V1 SYSTEM V2.0.288  
Humidity: 52%  
Test Distance: 5.850m [K=1.0000]  
Remarks: